

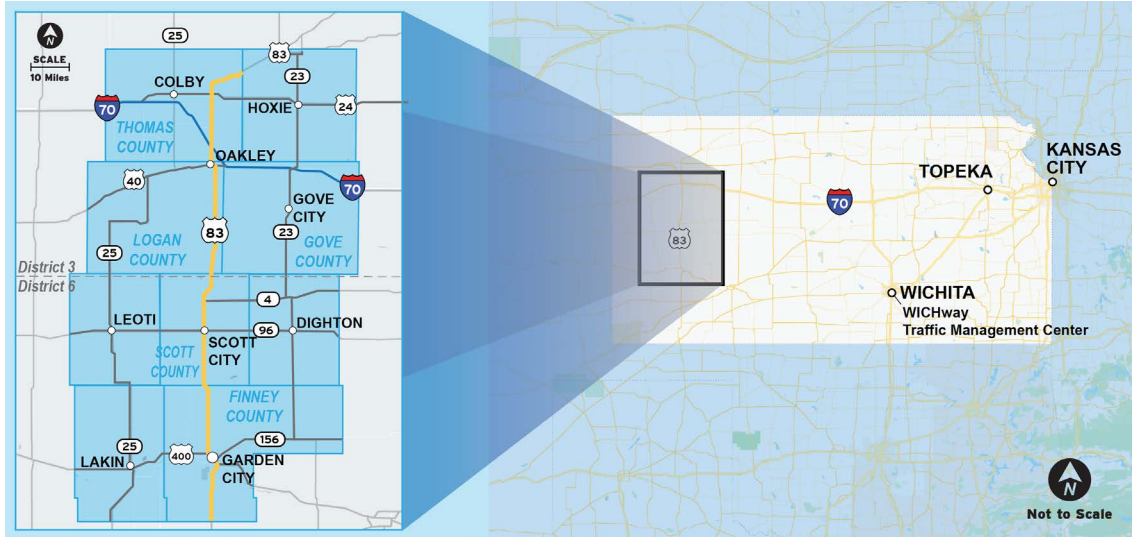
# U.S. 83 ADVANCED TECHNOLOGY PROJECT

Thomas, Logan, Gove, Scott, and Finney Counties



Fall 2023

Visit the project webpage.



## Project Description

U.S. 83 is a critical rural freight corridor for western Kansas serving a variety of industries including agriculture, energy and livestock. Expanding transportation opportunities along the U.S. 83 corridor will improve economic productivity as well as the safe and efficient movement of agriculture products and other freight, benefiting everyone who travels on the corridor.

In September 2022, the Kansas Department of Transportation was awarded a \$6.7 million Advanced Transportation and Congestion Management Technologies Deployment grant from the Federal Highway Administration to support the U.S. 83 Advanced Technology Project.

The Great Plains Rural Freight Technology Corridor Project (U.S. 83 Advanced Technology) will utilize technology aimed at improving safety and economic productivity along U.S. 83. The project limits extend approximately 131 miles, from the Thomas/Sheridan county line south to the Finney/Haskell county line.



Crashes on rural two-lane highways can block traffic for hours. As a result, emergency response times in rural areas can be twice, or longer, than that of urban areas. Additional technology deployment on U.S. 83 can benefit freight carriers and motorists by providing updates on items such as crashes, congestion, weather and available truck parking.

The project has two phases:

- 1. Phase 1:** KDOT will install fiber optic cable along U.S. 83 between Garden City and I-70. This is the foundation for making technology upgrades to the corridor. This is set to be completed by 2025.
- 2. Phase 2:** KDOT will install and deploy Intelligent Transportation Systems (ITS) technologies including Advanced Technology that will make information available for motorists prior to and while traveling on U.S. 83. Construction will start after Phase 1 is complete and is set to be operational by 2026.

Construction on U.S. 83 is expected to have minimal impact on those who travel on the roadway.



### Project Contact Information:

Lisa Mussman,  
Northwest Public Affairs Manager  
[Lisa.Mussman@ks.gov](mailto:Lisa.Mussman@ks.gov)

Yazmin Moreno,  
Southwest Public Affairs Manager  
[Yazmin.Moreno@ks.gov](mailto:Yazmin.Moreno@ks.gov)

For more information, please visit <https://ike.ksdot.gov/us-83-connected-vehicle-project>. This information can be made available in alternative accessible formats by contacting 785.296.3585 Voice/Hearing Impaired-711.

Pub# 9.2023.5.13001

# U.S. 83 ADVANCED TECHNOLOGY PROJECT

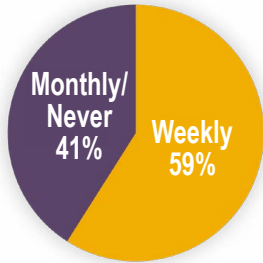
Thomas, Logan, Gove, Scott, and Finney Counties



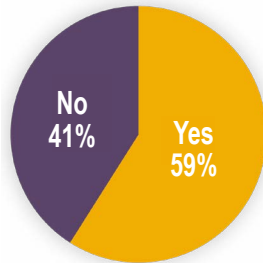
Fall 2023

Visit the project webpage.

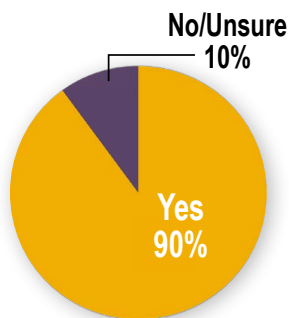
## What we've heard from stakeholders so far:



59% of stakeholders polled use U.S. 83 on a weekly basis



59% of U.S. 83 stakeholders polled plan their trips ahead of time



90% of stakeholders polled said they would use free, real-time traffic information

## How will advanced technology work on U.S. 83?

Upgrading U.S. 83 with ITS and advanced technologies and leveraging traveler information-sharing technologies, such as KanDrive and Waze, will improve the ability for freight movers and the public to receive advance notice of road work, crashes or other issues impacting travel times. Truck drivers may be informed of roadway issues through in-cab systems or dispatch, whereas the public could be informed through traffic/road condition applications such as KanDrive and Waze. The graphic below depicts how technology can collect travel condition information and then relay it to people to help them make more informed decisions on their trip.

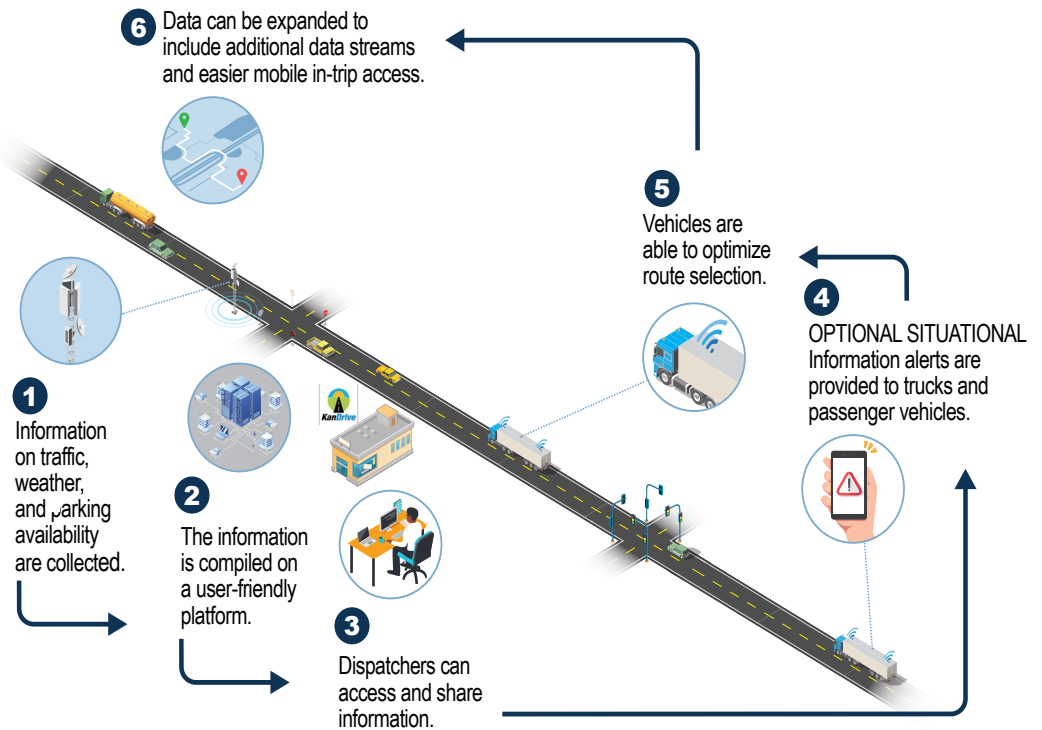


Image depicts how advanced technology works and is not a depiction of U.S. 83 corridor



### Project Contact Information:

Lisa Mussman,  
Northwest Public Affairs Manager  
[Lisa.Mussman@ks.gov](mailto:Lisa.Mussman@ks.gov)

Yazmin Moreno,  
Southwest Public Affairs Manager  
[Yazmin.Moreno@ks.gov](mailto:Yazmin.Moreno@ks.gov)

For more information, please visit <https://ike.ksdot.gov/us-83-connected-vehicle-project>. This information can be made available in alternative accessible formats by contacting 785.296.3585 Voice/Hearing Impaired-711.