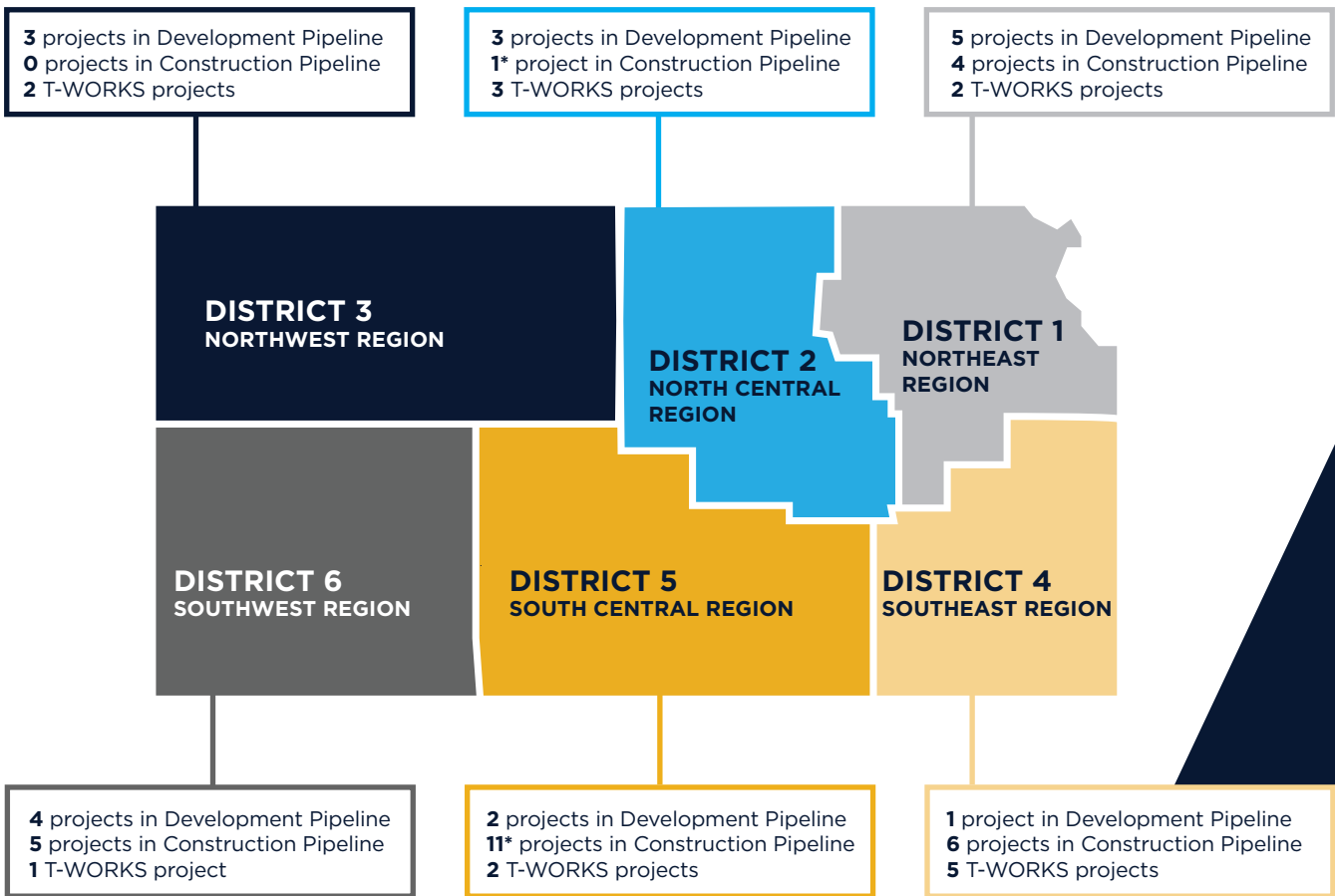




In July 2021, the first IKE program highway modernization and expansion projects that KDOT is committed to constructing were announced. Previously, these projects were in the IKE development pipeline. Most of these projects will start construction in 2023. For more information on these projects, visit ksdotike.org.

IKE PROGRESS

MODERNIZATION + EXPANSION PROJECTS



*Includes one project that falls within both districts.
T-WORKS projects have been let for construction and/or contractor work has begun.

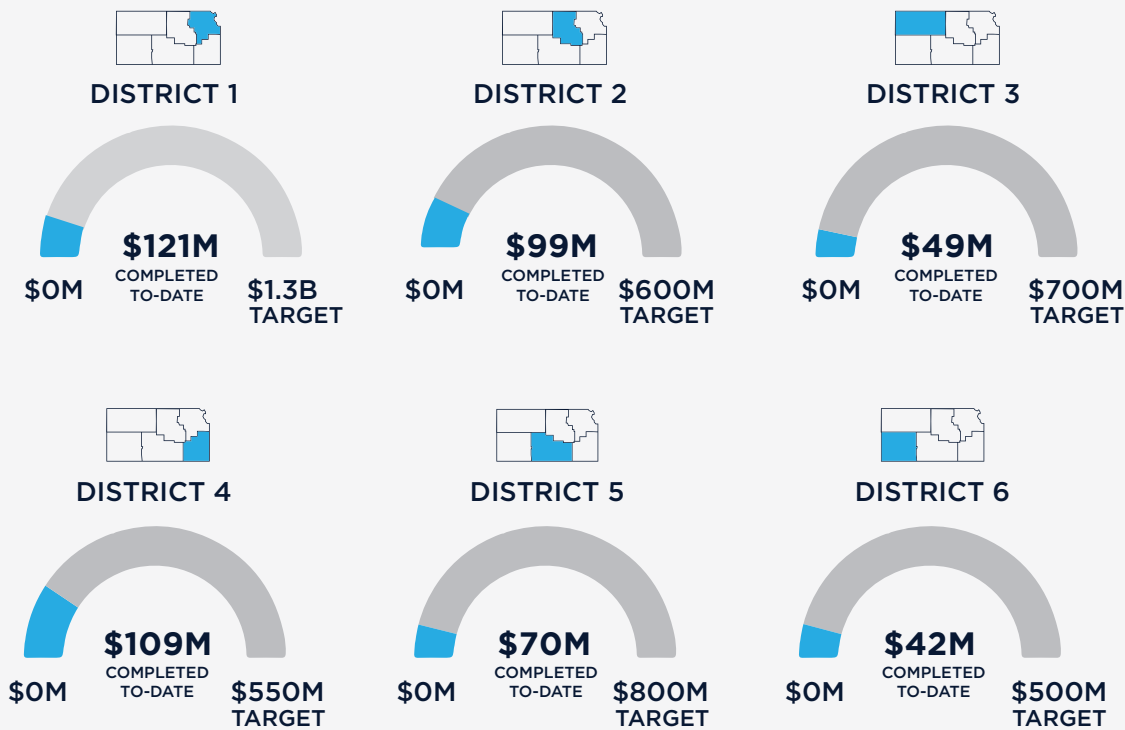


PRESERVATION PROGRESS



INVESTMENT TARGETS

IKE legislation requires KDOT to establish minimum commitments of Preservation investment levels. The graphs below provide estimates for preservation projects completed to-date, which will be the majority of the total IKE program investment. Preservation projects must all be let to construction by the end of the program's 10th and final year.



\$8 MILLION PROMISE

Governor Laura Kelly, the Kansas Legislature and KDOT believe it is important for all Kansans to benefit from the IKE program. Thus, IKE legislation requires at least \$8 million to be invested in each county across Kansas. This \$8 Million Promise to Kansans will be made up of investments in highway preservation, expansion and modernization, aviation, transit, rail, bicycle/pedestrian projects and others that address technology and economic development. Track KDOT's progress delivering on this promise online at: ksdotike.org/accountability/commitments.



**YOU SPEAK.
KDOT LISTENS.
TOGETHER, WE WORK.**

For more information regarding the Eisenhower Legacy Transportation Program, visit www.ksdotike.org or email ike@ks.gov. This information can be made available in alternative accessible formats by contacting the KDOT Division of Communications 785.296.3585 (voice) - 711 hearing impaired.