

PUBLIC MEETING



K-4 Modernization Project in Saline County

CDC guidelines to help prevent the spread of COVID-19 will be followed.
Masks will be required for all attendees.



For more information, please visit
ksdotike.org/k-4-saline-county

PROJECT OVERVIEW

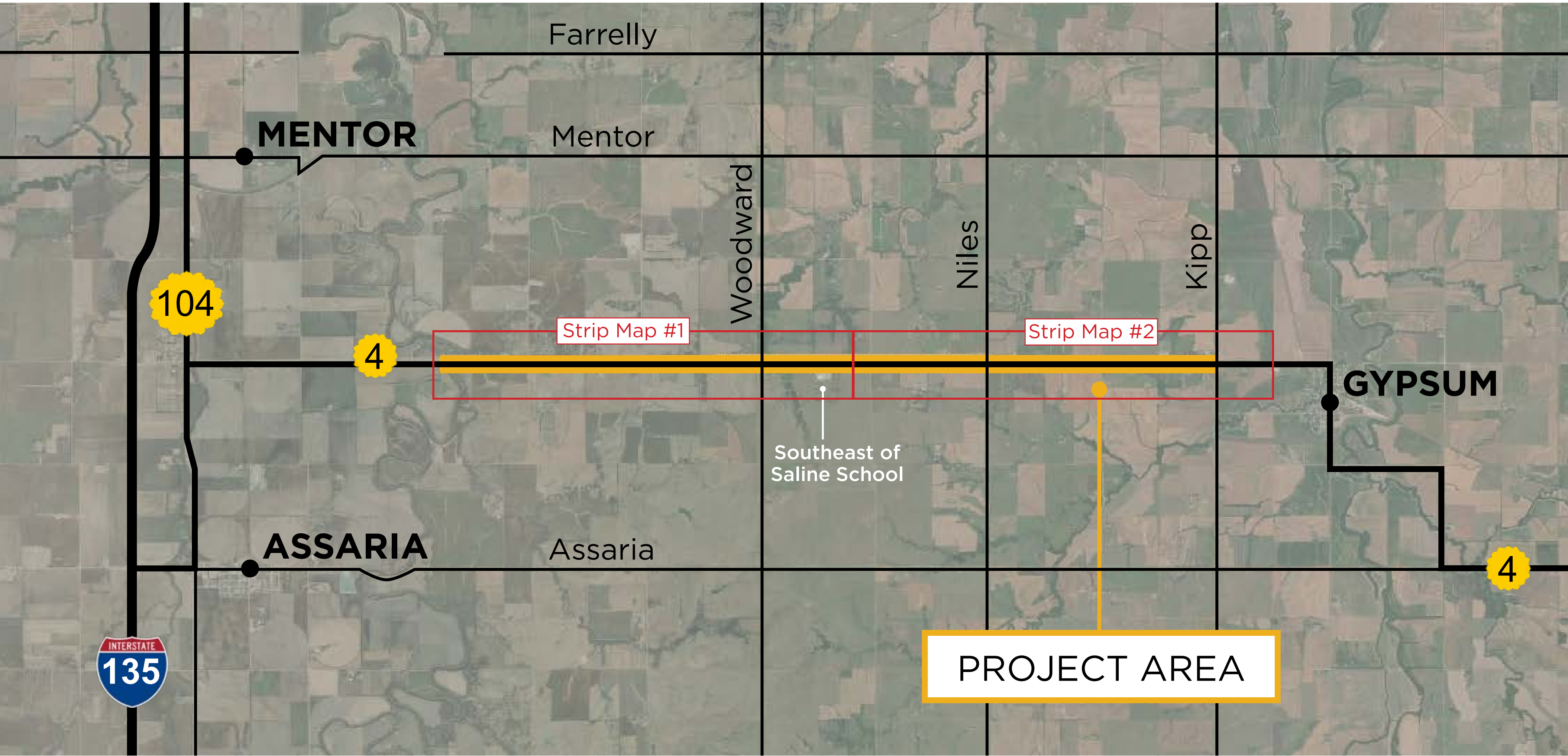


INTRODUCTION

This project is part of the Kansas Department of Transportation (KDOT) IKE program. IKE is a 10-year program that addresses highways, bridges, public transit and other transportation needs across Kansas. The program and associated projects are focused on making roads safer, supporting economic growth and creating more options and resources for Kansans and their communities.

TENTATIVE SCHEDULE

- Previous Study Phase
1st Public Input Meeting - Oct. 2013
2nd Public Input Meeting - Nov. 2014
- IKE Development Pipeline
Project Restart - June 2021
3rd Public Input Meeting - Dec. 2021
30% Design Plans - Dec. 2021
4th Public Input Meeting - April 2022
60% Design Plans - May 2022
90% Design Plans - Dec. 2023
100% Design Plans - April 2024



PROJECT AREA

The project is located about 2 miles east of the K-4/K-104 junction and extends about 7 miles east to Kipp Road. The new alignment of K-4 will be offset to the north through a majority of the project limits to improve sight distance, improve roadside safety (flatten side slopes) and add paved shoulders. Traffic will be maintained during construction via existing K-4. Temporary widening or closures with detours may be required at the eastern limits of the project.

FUNDING & CONSTRUCTION

The estimated project construction cost is approximately \$20 million. Cost estimates will be refined throughout the design phase.

The K-4 modernization project is in the IKE Development Pipeline. While a construction letting has not yet been funded at this time, it will be evaluated as the design process continues.



PREVIOUS STUDY & NEXT STEPS



PREVIOUS STUDY SUMMARY

K-4 from the junction of K-104 to the west city limits of Gypsum in Saline County was previously identified as a KDOT T-WORKS project in the statewide transportation program from 2010-2020. This 9.9-mile corridor was selected for evaluation based on public comments related to vertical profile issues and sight distances, particularly at a number of intersections along the corridor. A previous planning study completed in 2015 determined reasonable and cost-effective solutions for the K-4 corridor. A public meeting was held in October 2013 to refine the scope to be evaluated in the study phase. A preferred alternative was selected and advanced to 30% design. A second public meeting was held in November 2014.

Another element of the previous study was to define the corridor’s right-of-way. In 1965, a design for the K-4 corridor was partially completed. Right-of-way was purchased adjacent to the existing highway on the north to accommodate the planned construction. Construction was never initiated at the time, but the previously purchased right-of-way was critical to the study in order for it to be evaluated for use with potential alternatives.

PREVIOUS PUBLIC INPUT

The 2015 planning study was used to gauge the public’s opinions and priorities for studying improvements to the K-4 corridor. An online survey and public meeting captured responses from the public. Input received influenced modifying the alignment and profile to help minimize right-of-way impacts to the north and extending the project limits to Kipp Road.

Overall, residents expressed concern about safety and anticipated roadside, intersection and school traffic-related improvements.

NEXT STEPS

- Refine Preferred Alignment**
Based on public feedback, a preferred alignment will be advanced to design. The next public meeting will be in April, 2022.
- Develop Final Engineering Plans**
Final plans, cost estimates and phasing plans will be developed.
- Advance to Construction**
This project is in the IKE Development Pipeline. While a construction letting has not yet been funded at this time, it will be evaluated as the design process continues.



Existing K-4 Highway
Looking east



Existing K-4 Highway
Looking west



Existing K-4 Highway
Looking west towards school



SHARE YOUR THOUGHTS!



Your input is important! There are multiple ways to share your thoughts about the K-4 modernization project in Saline County either in-person or online.

1 REVIEW THE CONCEPT

Review the draft roadway alignment and other potential improvements presented on the following tables.

2 ASK THE PROJECT TEAM

Several members of the project team are available to provide information and answer questions.

Based on CDC guidelines to help prevent the spread of COVID-19, please be respectful of physical distancing as possible.

3 COMPLETE A COMMENT CARD

Provide additional input or questions via a comment card. Comments may also be provided on the project website.

4 VISIT THE PROJECT WEBSITE

The same information and feedback opportunities are also provided online if you would like to provide more input at a later time.

Visit ksdotike.org/k-4-saline-county after the meeting and encourage others to participate online as well.

Comments will be accepted from December 3 to December 17.

