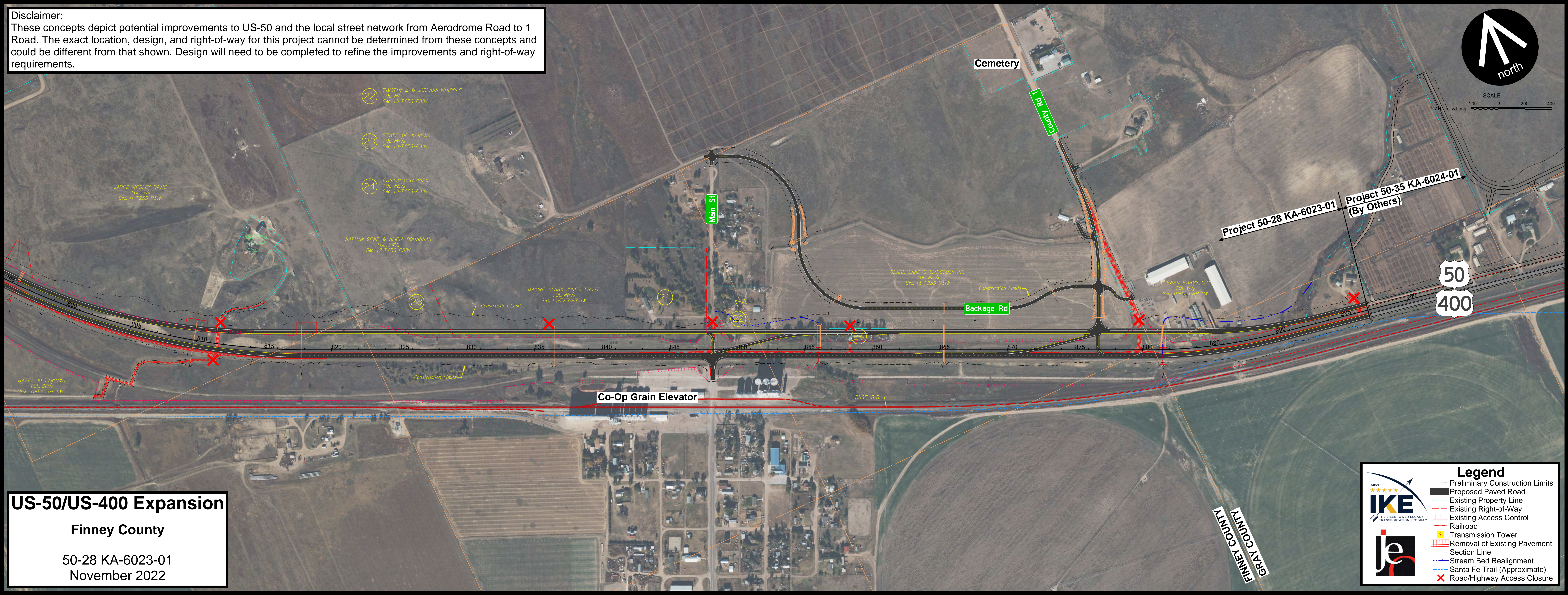





Disclaimer:  
These concepts depict potential improvements to US-50 and the local street network from Aerodrome Road to 1 Road. The exact location, design, and right-of-way for this project cannot be determined from these concepts and could be different from that shown. Design will need to be completed to refine the improvements and right-of-way requirements.



**US-50/US-400 Expansion**  
**Finney County**  
50-28 KA-6023-01  
November 2022



**Legend**

- Preliminary Construction Limits
- Proposed Paved Road
- Existing Property Line
- Existing Right-of-Way
- Existing Access Control
- Railroad
- Transmission Tower
- Removal of Existing Pavement
- Section Line
- Stream Bed Realignment
- Santa Fe Trail (Approximate)
- Road/Highway Access Closure