

# U.S. 54 Expansion in Seward County

And other regional projects

**Public Meeting**

*November 10, 2022*







# Today's Agenda

- Projects Overview / Regional Benefits
  - Planning and Design
  - Under Construction
  - Future Construction
- Access Changes for Safety
- Next Steps
- One-on-one Discussions





# Meeting Goals

- We want to hear from you
- Share KDOT's vision for current and planned regional improvements – how can we better serve your needs?
- Answer questions and address concerns
- Establish open line of communications

# PROJECTS OVERVIEW





ENHANCE  
**SAFETY**



INCREASE  
**CAPACITY**

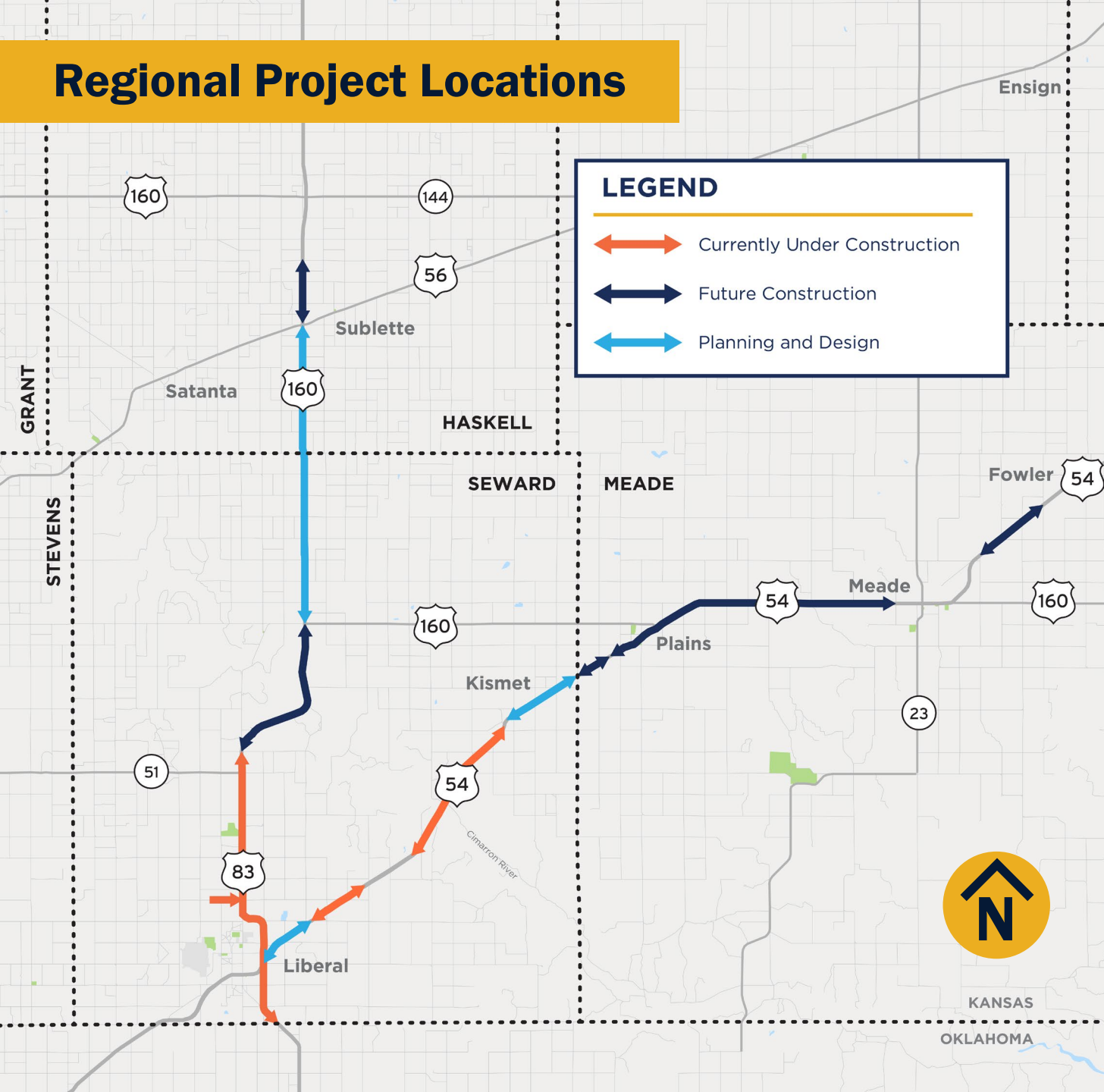


KEEP KANSANS  
**MOVING**

## Regional Benefits

- 12 major projects in the region
- **\$100M+** of investment
- **20 miles of four-lane expansion**
- **40 miles of passing lanes**
- **40 miles of preservation and maintenance**

# Regional Project Locations



There are 12 projects in various stages along U.S. 83 and U.S. 54 including:

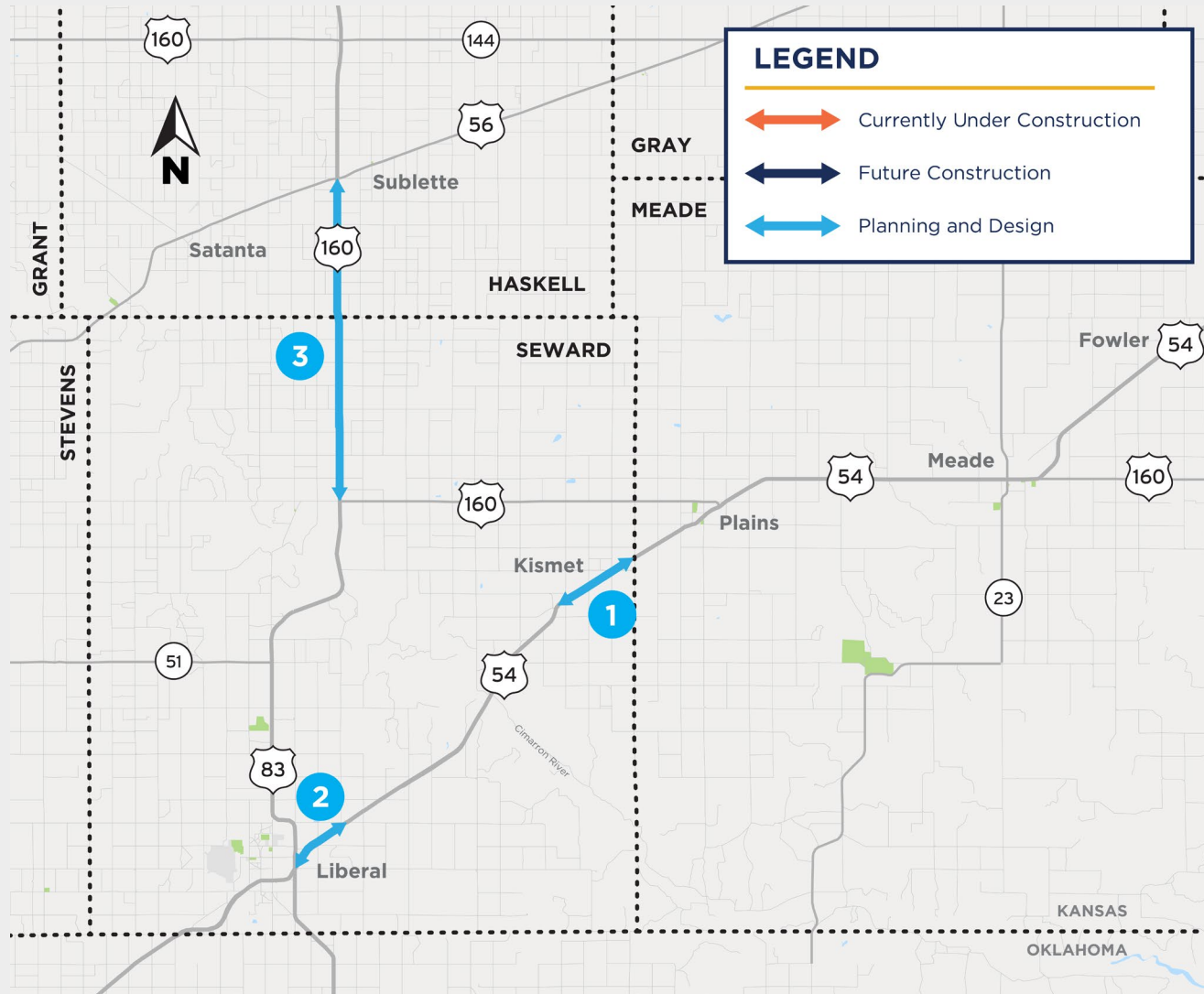
- Four-lane expansion
- Passing lanes
- Pavement preservation
- Intersection Improvements

We've organized these projects into three categories for discussion:

- Planning and design
- Currently under construction
- Future construction



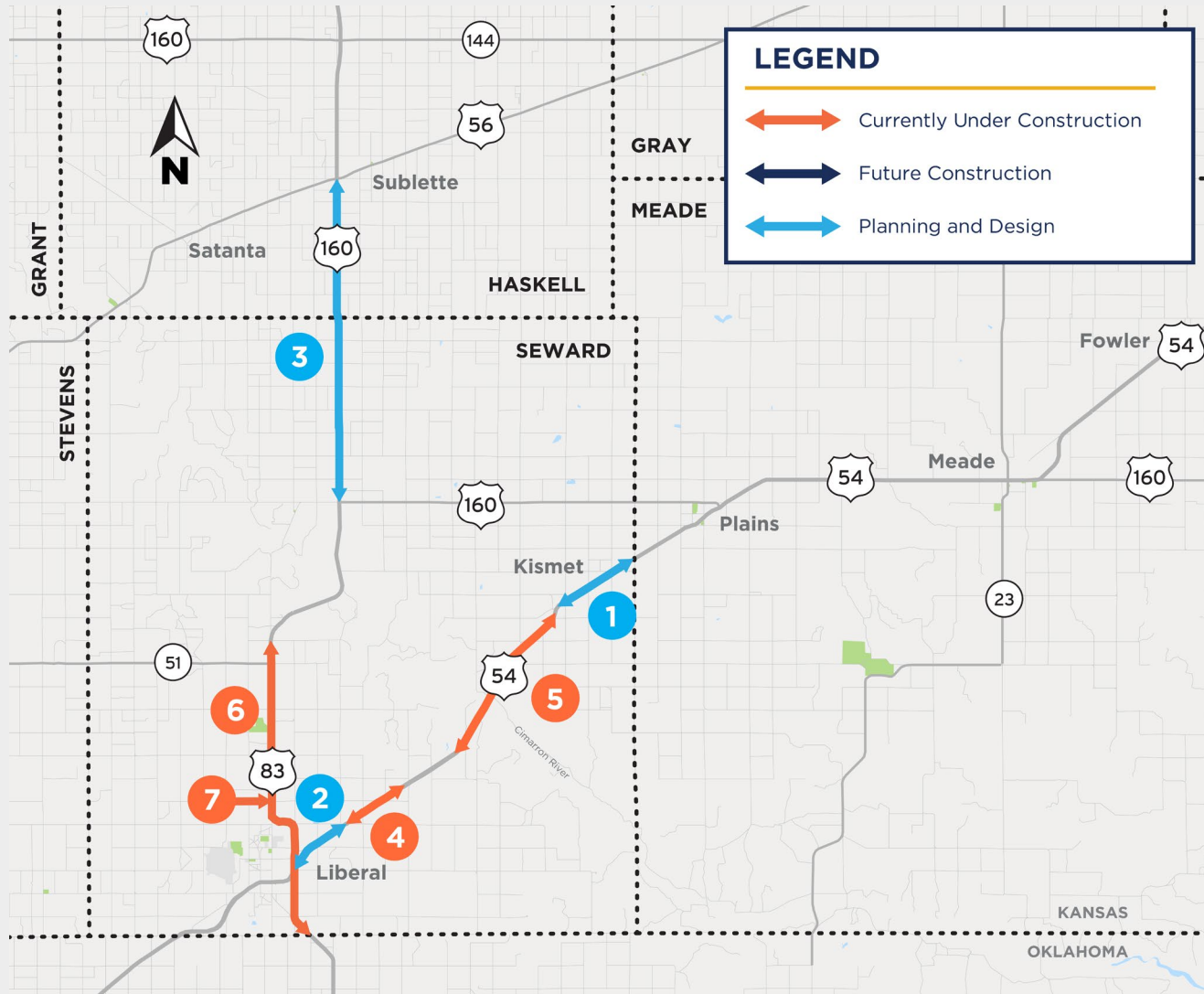
# Regional Projects



## PLANNING AND DESIGN

- 1** U.S. 54 Four-Lane Expansion Design from 0.5 miles NE of Panhandle Rd to Seward/Meade county line
- 2** U.S. 54 Four-Lane Expansion Discovery Phase from U.S. 83 to Tucker Rd (includes the former Six-Points Intersection)
- 3** U.S. 83 Passing Lanes Study from U.S. 160 to U.S. 56 (Two separate projects split at the Seward/Haskell county line)

# Regional Projects



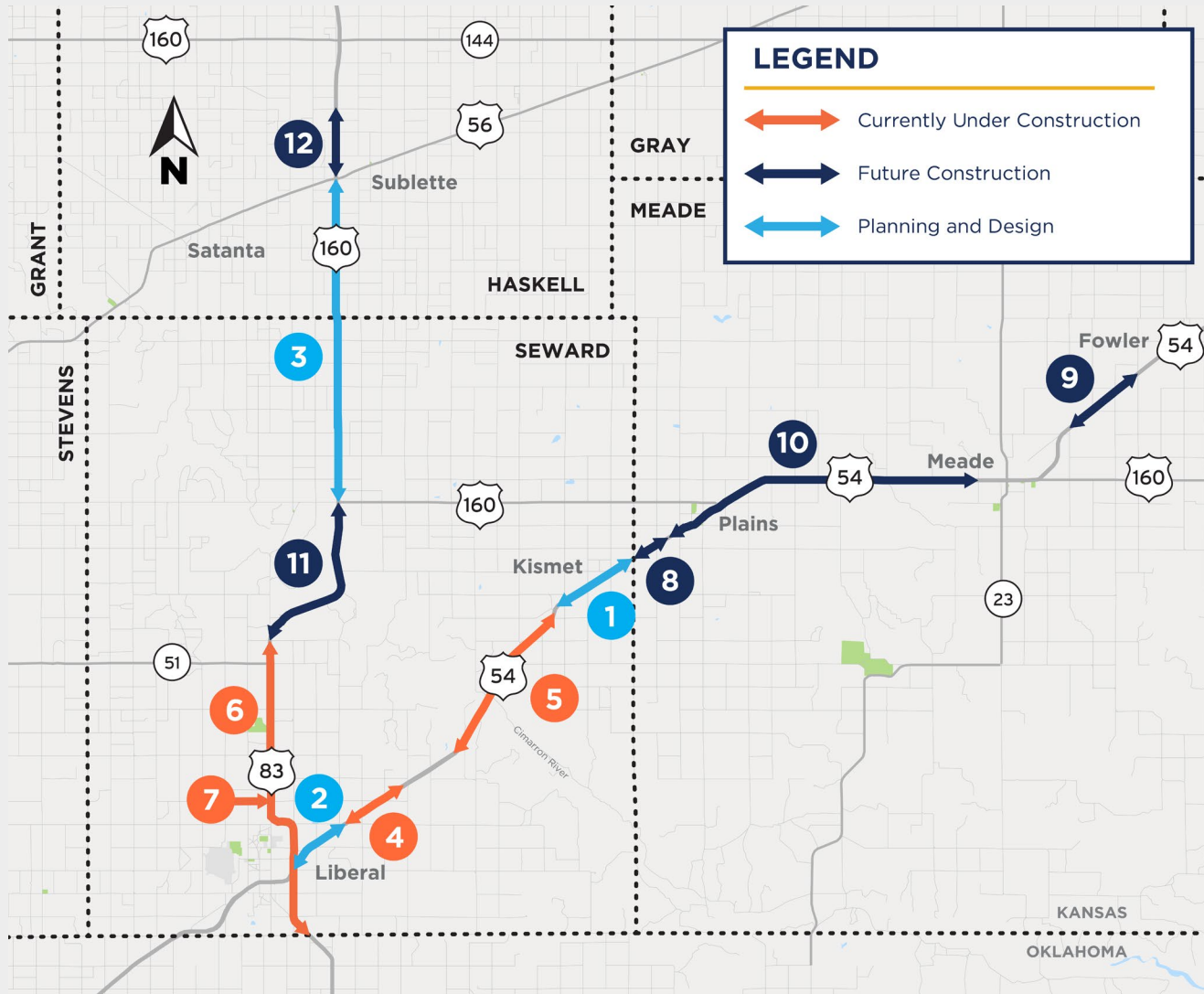
## CURRENTLY UNDER CONSTRUCTION

- ★ **4** **U.S. 54 Four-Lane Expansion** from Tucker Rd to County Rd O (\$23.3M)  
*Timeline: Estimated completion Nov. 2023*
- ★ **5** **U.S. 54 Four-Lane Expansion** from west of Arkalon Park Rd (Rd R) to Panhandle Rd, new bridge over Cimarron River (\$27.6M)  
*Timeline: Estimated completion Nov. 2022*
- ★ **6** **U.S. 83 Repaving with Passing Lanes** from Oklahoma border to just north of U.S. 83/K-51 junction (\$17.6M)  
*Timeline: Estimated completion Oct. 2023*
- 7** **U.S. 83 & Salley Road Intersection Improvements** adding turn lanes and an acceleration lane (\$2.7M)  
*Timeline: Estimated completion Oct. 2023*

★ *Denotes delayed T-WORKS project*



# Regional Projects



## FUTURE CONSTRUCTION

- 8** U.S. 54 Passing Lanes from Meade/Seward county line east for 1.8 miles  
*Timeline: Contractor bids planned for spring 2023*
- 9** U.S. 54 Passing Lanes 3.4 miles east of the U.S. 54/U.S. 160 junction east for 2.7 miles  
*Timeline: Contractor bids planned for spring 2023*
- 10** U.S. 54 Repaving 1.8 miles east of Meade/Seward county line to west of Meade city limits  
*Timeline: Contractor selected; construction to start in 2023*
- 11** U.S. 83 Repaving with Passing Lanes from 1 mile north of K-51 to U.S. 160  
*Timeline: Contractor selected; construction to start in 2023*
- 12** U.S. 83 Pavement Reconstruction from Sublette to County Rd 150  
*Timeline: Contractor bids planned for winter 2023*

# ACCESS CHANGES FOR SAFETY





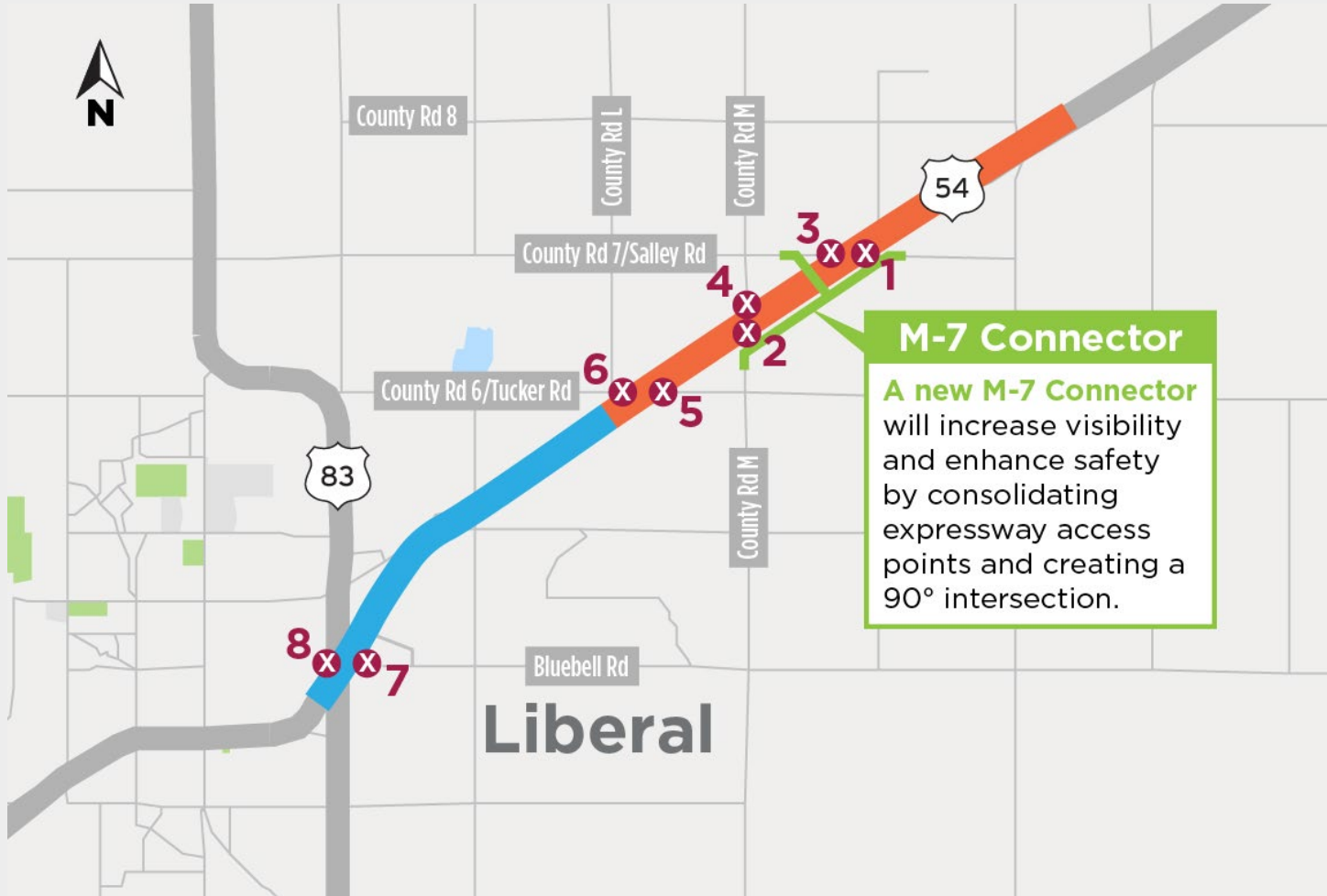
# Benefits of Access Management

*It's all about SAFETY!*

- Fewer opportunities for vehicle conflict points
- Reduced crashes
- Keeping people and goods moving



# Access Management on U.S. 54



## ACCESS CHANGES

**1/2** – On the south, County Rd 7 and County Rd M access to U.S. 54 will be closed and rerouted via a new M-7 Connector anticipated to be open by the end of 2022.

**3/4** – On the north, County Rd 7 and County Rd M access to U.S. 54 will be closed and rerouted via a new M-7 Connector. Construction is anticipated in 2023.

**5/6** – County Rd 6 access to U.S. 54 is closed on both sides of the expressway. Additional access roads are being considered in future phases.

**7/8** – Bluebell Rd and 2nd St access to U.S. 54 was closed in 2013.

# Next Steps



Community-wide public meeting 4-6 p.m.  
*Brief presentations at 4:15 and 5:15 p.m.*



Public comment period through Nov. 23



Comment and sign-up for email updates:  
[www.ksdotike.org/us-54-expansion-seward-county](http://www.ksdotike.org/us-54-expansion-seward-county)



Future project-specific outreach

# THANK YOU FOR YOUR TIME AND PARTICIPATION!

Review meeting information and comment online through Nov. 23:  
**[www.ksdotike.org/us-54-expansion-seward-county](http://www.ksdotike.org/us-54-expansion-seward-county)**

**Ron Hall**

Southwest District Engineer  
(620) 765-7074  
[ron.hall@ks.gov](mailto:ron.hall@ks.gov)

**Yazmin Moreno**

Public Affairs Manager  
(620) 765-7080  
[yazmin.moreno@ks.gov](mailto:yazmin.moreno@ks.gov)





Results of southwest Kansas breakout discussions identifying high- and medium-priority expansion projects for the region:

EXPANSION



Local Consult  
2021

Map ID	Project Description	Scope	Miles	FY-25 Cost \$M	Engineer Score (50 pts)	Economic Score (25 pts)
611	US-50 Kearny County: Lakin to Finney County Line	Passing Lanes	9.5	\$13 <sup>v</sup>	23	19
615	US-50 Finney County: Kearny County Line to Holcomb	4-lane expressway	6	\$30	21	12
620	US-50 Ford County: Dodge City to US-283	4-lane expressway	2.4	\$10 <sup>v</sup>	45	13
613	US-54 Seward County: 0.5 miles Northeast of RS 1987 Jct, Northeast to Meade County Line	4-lane expressway	8.2	\$44 <sup>v</sup>	44	10
623	US-54 Meade County: Seward County Line to Clark County Line <sup>†</sup>	4-lane expressway	34	\$231	33	8
614	US-54 Clark County: Meade County Line to Ford County Line <sup>†</sup>	4-lane expressway	9.5	\$50	31	9
686	US-54 Seward County: US-83 to Tucker Rd <sup>†</sup>	4-lane expressway	3.0	\$12	21	13
683	US-83 Seward County: Liberal to Haskell County Line <sup>†</sup>	4-lane expressway	27	\$143	36	8
622	US-83 Haskell County: Seward County Line to US-160/K-144 <sup>†</sup>	4-lane expressway	12	\$64	32	9
622p	US-83 Haskell County: Seward County Line to US-160/K-144	Passing Lanes	12	\$13 <sup>v</sup>	32	18
626	US-83 Scott County: Scott City North to K-4	Passing Lanes	8	\$7 <sup>v</sup>	27	19
628	US-83 Scott County: Finney County Line to Scott City	Passing Lanes	14	\$7 <sup>v</sup>	26	24
618	US-83 Finney County: Garden City to Scott County Line	Passing Lanes	14	\$13 <sup>v</sup>	28	20

Projects presented in 2019; not scored this year

US-50 Finney County: Kearny-Finney County Line to Holcomb – The 4-lane expressway option is included on the list above.	Passing lanes
US-54 Ford County: Clark/Ford Co Line to Ford/Kiowa Co Line –Passing Lanes sections (5 total) on either side of this project were selected. May be added again but would like to see the impacts of the other passing lanes projects on the corridor.	Passing lanes
US-54 Seward County: Shamrock NE to Seward/Meade Co Line - Passing lanes further to the east are in the IKE pipeline. The 4-lane expressway above option is included on the list above.	Passing lanes
US-83 Finney County: 3 miles North of Plymell to Garden City - Passing lanes are being added in this area as part of Preservation+.	Passing lanes
US-83 Seward County: 1 mile N of K-51, N to Seward/Haskell County Line - Passing lanes are being added directly south of this area as part of Preservation+.	Passing lanes



Identified as a **high** priority



Identified as a **medium** priority