

K-68 Meetings

October 14, 2021

Public Officials Briefing: 4 to 5 p.m.

Public Meeting: 5:30 to 7:30 p.m.



Expanding K-68 to 4 lanes in Miami County, Kansas

Project Team

- KDOT

- Ryan Robinson, P.E., IKE PMC Transportation Project Manager
- Kris Norton, P.E., IKE PMC Coordinating Engineer
- Wayne Gudmonson, P.E., District Engineer
- Priscilla Petersen, Public Affairs Manager
- Lisa Hummel, Communications

- Consultant Team

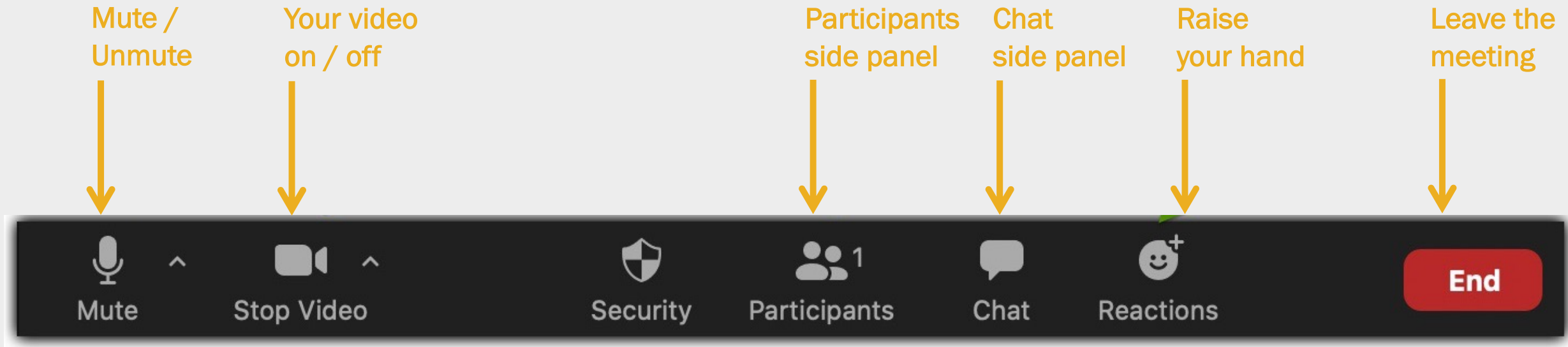
- Mike McKenna, P.E., Affinis
- Linda Rottinghaus, P.E., Affinis
- Triveece Penelton, AICP, NOMA, Vireo
- Laurie Brown, LEED®AP, Vireo
- Becca Pruett, Vireo



Today's Meeting

- Housekeeping
- Background
- Current Project
- Questions and Answers
- Next Steps





Note: Use *6 to mute / unmute if you're participating by phone.

Purpose and Need for the Project

- Cities and counties identified K-68 as a major traffic carrier and growth area
- K-68 is on the next ring of expansion from the KC Metro
- Significant residential, commercial, and industrial growth anticipated



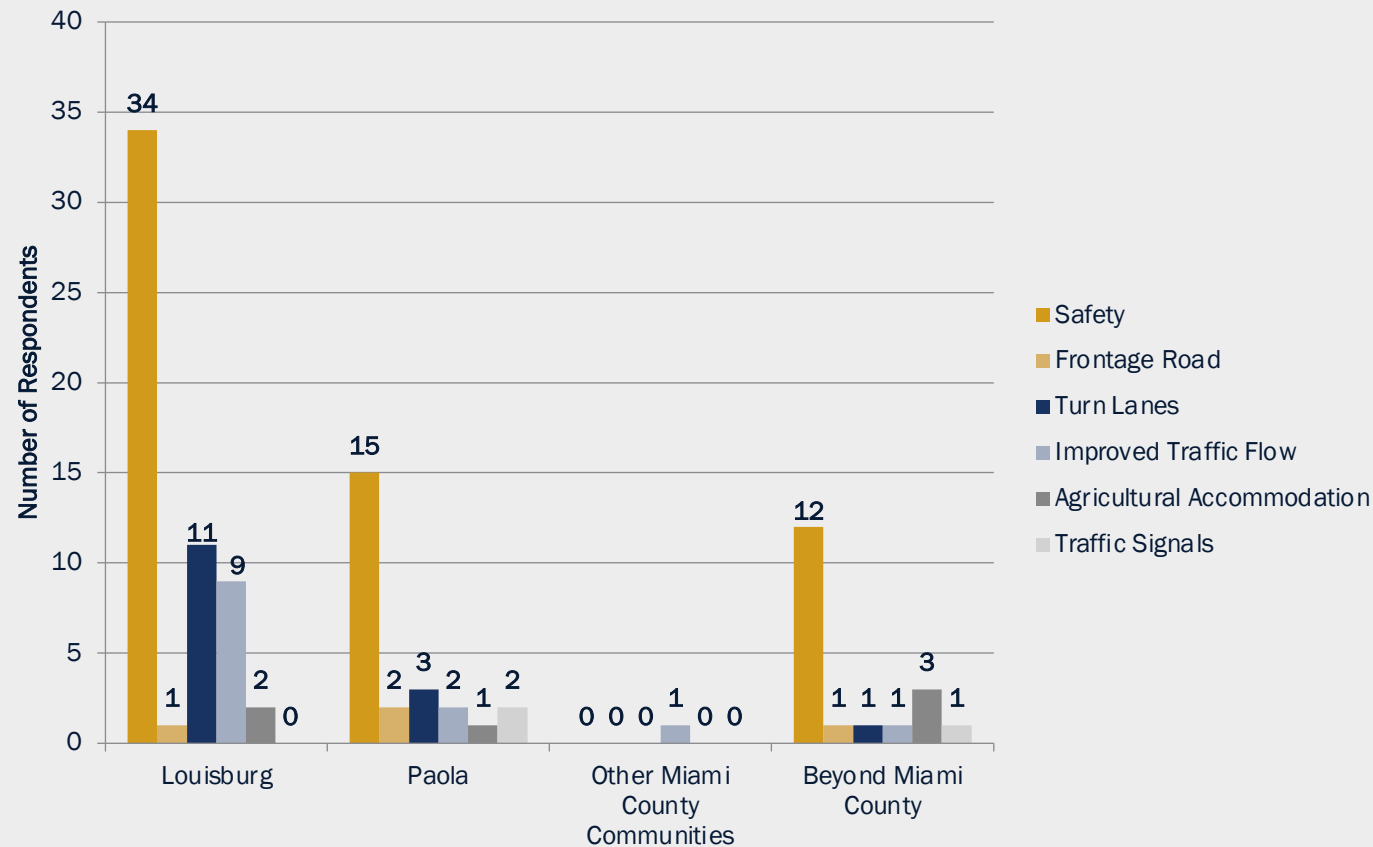
T-WORKS PIPELINE PROJECTS FOR K-68 IN MIAMI COUNTY

Project No.	Description	Pipeline	Letting	Tentative Schedules
KA-2373-01	Develop preliminary plans for a four-lane expressway and various locations for safety improvements, spanning 7.64 miles of K-68 from US-169 on the west to US-69 on the east (no construction funding)	T-WORKS	Planned development; no letting	Completed
KA-2373-02	Improve Somerset Road east on the south side of K-68 (\$2.174M)	T-WORKS	December 2021	Spring '22 – Fall '22
KA-2373-03	Add interim improvements to 3.19 miles of K-68 from US-169 on the west to US-69 on the east (\$15.2M)	T-WORKS	December 2021	Spring '22 – Spring '23

Community Feedback (Spring 2013)

T-WORKS Interim Improvements & Future Expressway

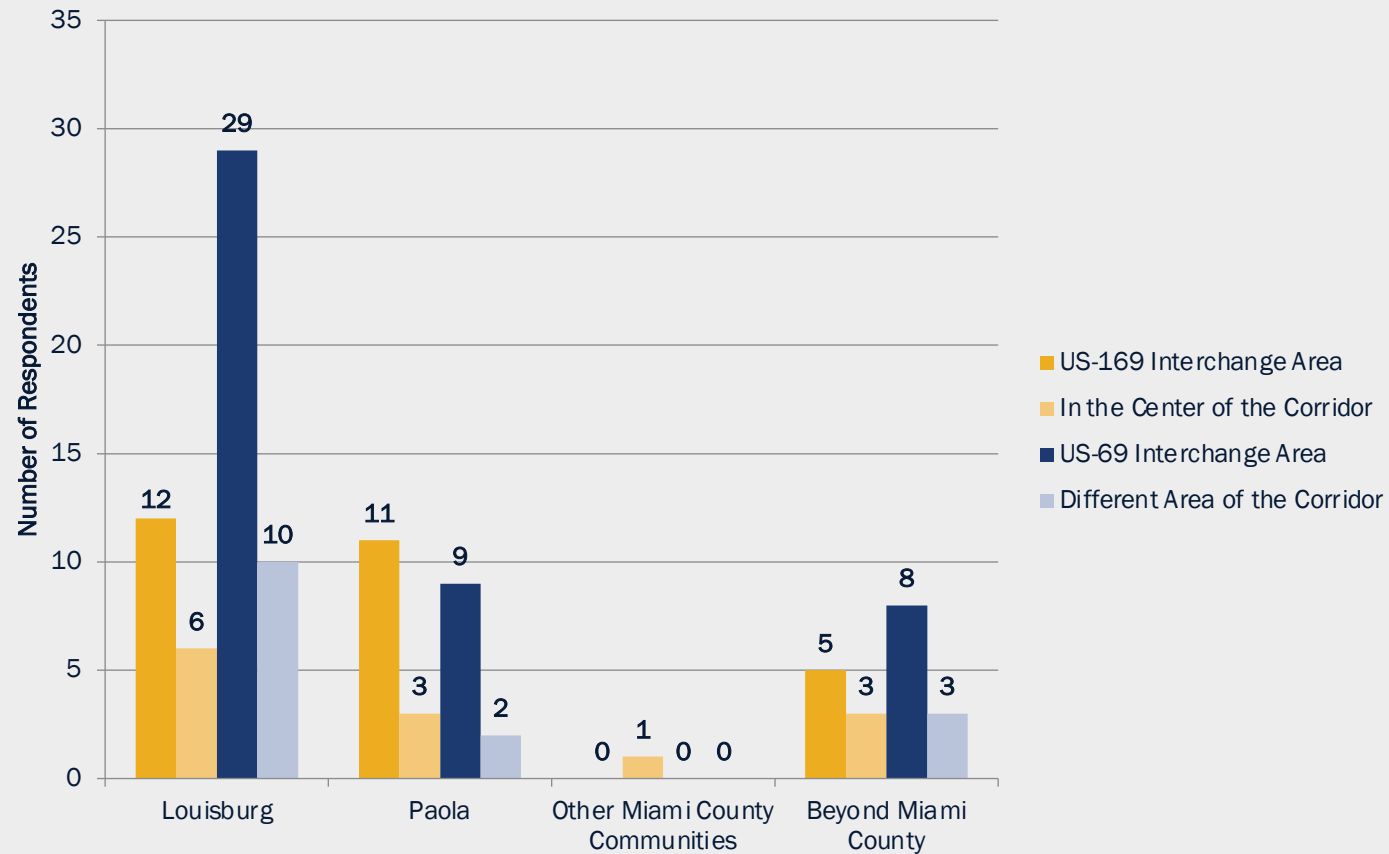
Most Important K-68 Improvements



Community Feedback (Spring 2013)

T-WORKS Interim Improvements & Future Expressway

Where to Build K-68 Improvements First



Community Feedback (Summer 2012)

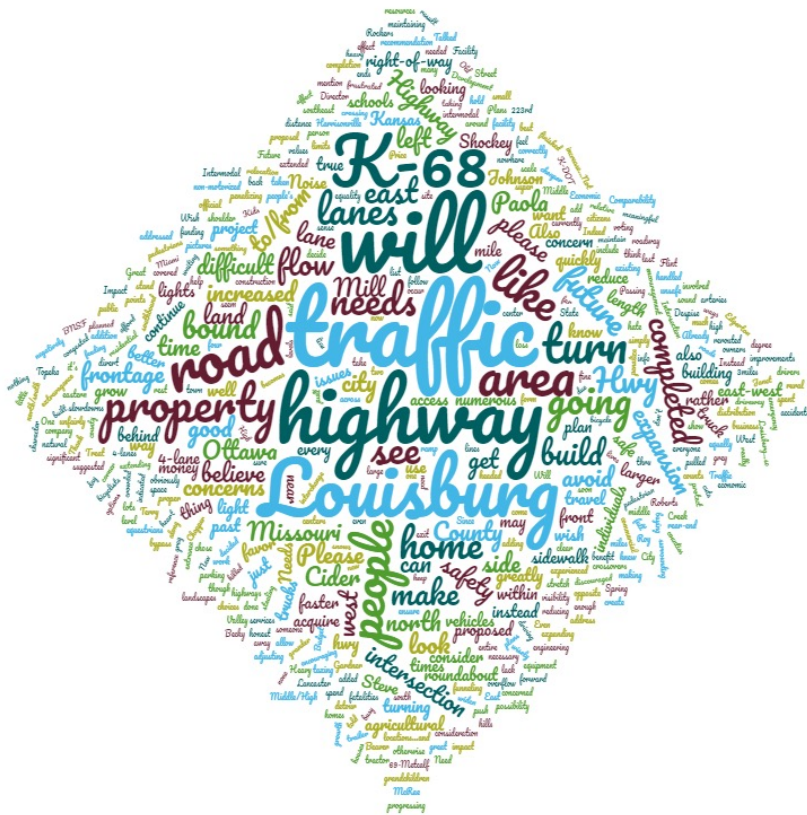
T-WORKS Interim Improvements on K-68 in Miami County

- Focus Groups and Community Meetings
 - Desire for improved corridor safety
 - Higher accident areas: Cider Mill, Beaver Creek and New Lancaster
 - Concerned about impacts
 - Properties and driveway access
 - Increasing traffic, especially from trucks
 - Interested in:
 - Turn lanes at intersections
 - Economic development
 - Traffic signals at/near US-169 Interchange



Community Feedback (Spring 2013)

T-WORKS Interim Improvements & Future Expressway



Other Comments from Louisburg Area Stakeholders



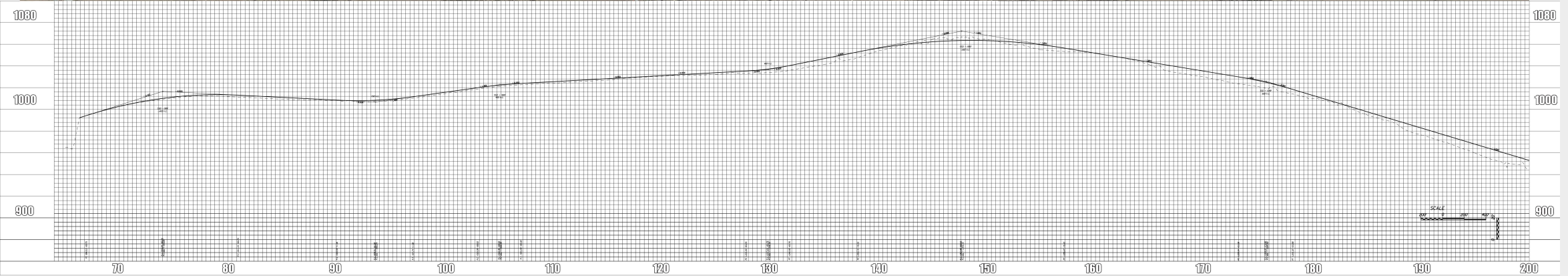
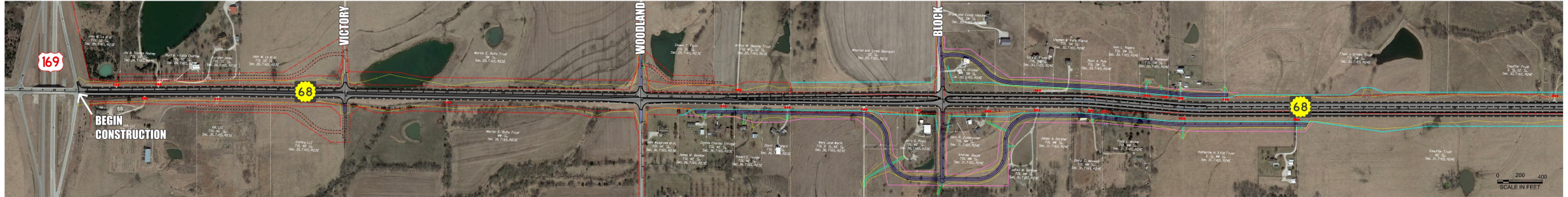
Other Comments from Paola Area Stakeholders

Current Project (KA-2373-04)

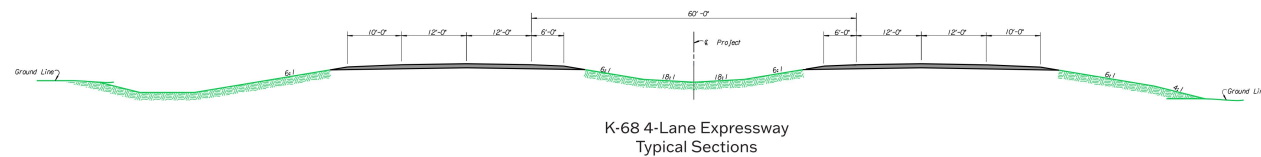
- Eisenhower Legacy Transportation Program (IKE) Modernization / Expansion Project
- Design plans for expanding 6.74 miles of K-68 to 4 lanes between US-169 and Spring Valley Road (just west of US-69 at Louisburg)
- Complete design during 2023
- Currently no construction funding



Example of a 4-Lane Expressway



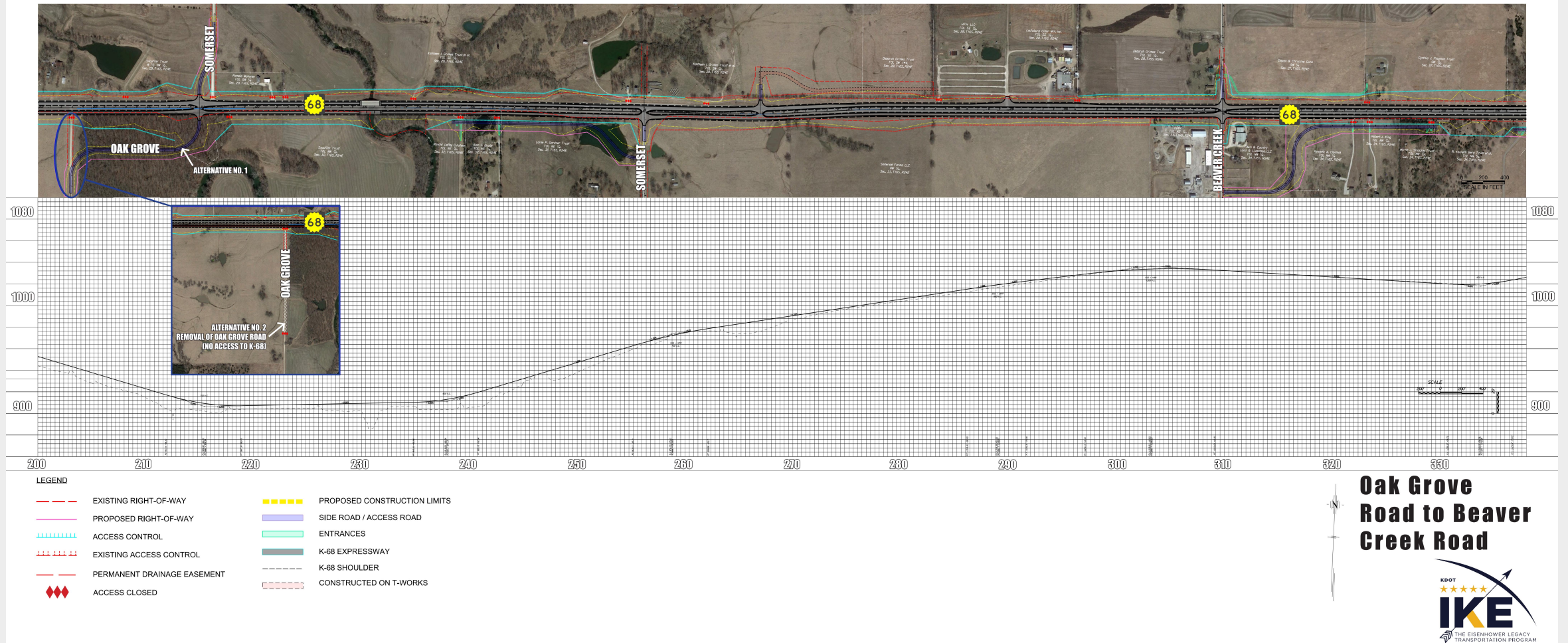
- LEGEND**
- | | |
|---------------------------------|----------------------------------|
| --- EXISTING RIGHT-OF-WAY | --- PROPOSED CONSTRUCTION LIMITS |
| --- PROPOSED RIGHT-OF-WAY | --- SIDE ROAD / ACCESS ROAD |
| --- ACCESS CONTROL | --- ENTRANCES |
| --- EXISTING ACCESS CONTROL | --- K-68 EXPRESSWAY |
| --- PERMANENT DRAINAGE EASEMENT | --- K-68 SHOULDER |
| --- ACCESS CLOSED | --- CONSTRUCTED ON T-WORKS |



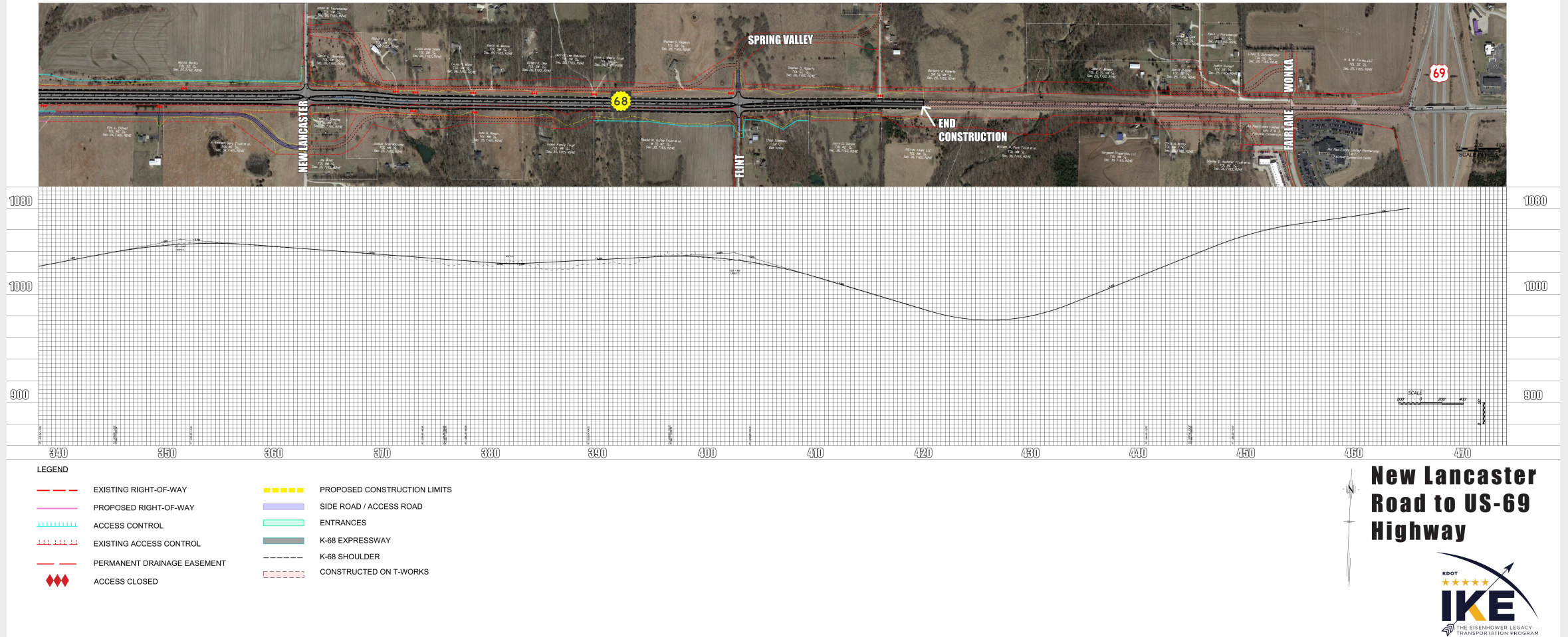
**US-169
Highway to
Block Road**



Preliminary Design



Preliminary Design



Preliminary Design

Questions & Answers

Next Steps

- Refine preliminary design plans – Spring 2022
- Continue community engagement – Summer/Fall 2022
 - Stakeholders Meetings
 - Public Officials Briefing
 - Public Meeting
 - Online commenting
- Develop final design plans – 2023
- Construction – ?



Stay Informed

- Comment online through November 1, 2021 (k68.digicate.com)
- Bookmark www.ksdotike.org/Miami-County-K-68-Expansion
- Follow KDOT on social media
 - www.facebook.com/KSDOTHQ/ (@KSDOTHQ)
 - twitter.com/KDOTHQ (KSDOTHQ)
- Continue to stay in touch with:
 - Ryan Robinson, IKE PMC Transportation Project Manager, ryan.robinson@ks.gov or 913-955-2367
 - Priscilla Petersen, KDOT Public Affairs Manager, priscilla.petersen@ks.gov or 620-902-6433

Thank You!