



U.S. 69 Highway Study 2024

Crawford County



The Kansas Department of Transportation (KDOT) is kicking off a new study - the U.S. 69 Highway Study – 2024. Our focus is on understanding the issues and opportunities associated with U.S. 69 in Crawford County. KDOT will compile community input as to how the current highway is working now, as well as traffic and crash data. As part of this effort, we are asking the community to provide input on current and future expectations for the highway. Check out the study website for more information on the study and how you can participate.

This survey will be open until August 23, 2024. Thank you for your participation!

If you'd prefer an online survey, please visit: arcg.is/POTv4 or scan the QR code.



Did you participate in the 1st round of community engagement in May of 2024?

- Yes No

Zip Code (optional)

Answering this question is completely optional. If you choose to answer it, it helps us to know the geographic representation of the input we receive. Our goal is to collect input from all zip codes within the study area.

Section 1: Did We Hear You Right?

We received over 1,600 individual comments about the corridor when we were here in May, and we summarized them into these main themes. Let us know if we heard you right by marking your level of agreement.

What Is Working Well

Access to Properties

- It is easy to access residential and commercial properties from U.S. 69

- Strongly Disagree
 Disagree
 Neutral
 Agree
 Strongly Agree

Road Surface Drainage

- Water drains quickly from the road surface
- No overtopping occurs
- Standing water on the roadway is very minimal

- Strongly Disagree
 Disagree
 Neutral
 Agree
 Strongly Agree

Traffic Flow on North End

- There is smooth traffic flow along the 4-lane segment

- Strongly Disagree Disagree Neutral Agree Strongly Agree

Mailing Instructions:

PEC
Attn: US-69 Study
303 South Topeka
Wichita, KS 67202

What Could Work Better

Traffic Signals

- There are too many traffic signals
- Signals cause traffic to back up.
- Red light running happens
- It takes too long to make a turn
- Signal timing is either too long or too short

- Strongly Disagree
- Disagree
- Neutral
- Agree
- Strongly Agree

Intersection Layouts

- Lack of turn lanes
- It is difficult to maneuver intersections
- Some intersections do not accommodate freight traffic well

- Strongly Disagree
- Disagree
- Neutral
- Agree
- Strongly Agree

Traffic Flow

- There are too many stops, leading to stop and go traffic
 - Freight access to/from local businesses is difficult

- Strongly Disagree
- Disagree
- Neutral
- Agree
- Strongly Agree

Opportunities

Improve Traffic Flow

- For all vehicle types – cars, passenger trucks, school buses, semis
- For all travel directions – north, south, east, west
- At intersecting streets and along the highway

- Strongly Disagree
- Disagree
- Neutral
- Agree
- Strongly Agree

Land Use Planning

- Re-evaluate local plans relating to growth and development/re-development of the community along the highway.

- Strongly Disagree
- Disagree
- Neutral
- Agree
- Strongly Agree

Economic Development

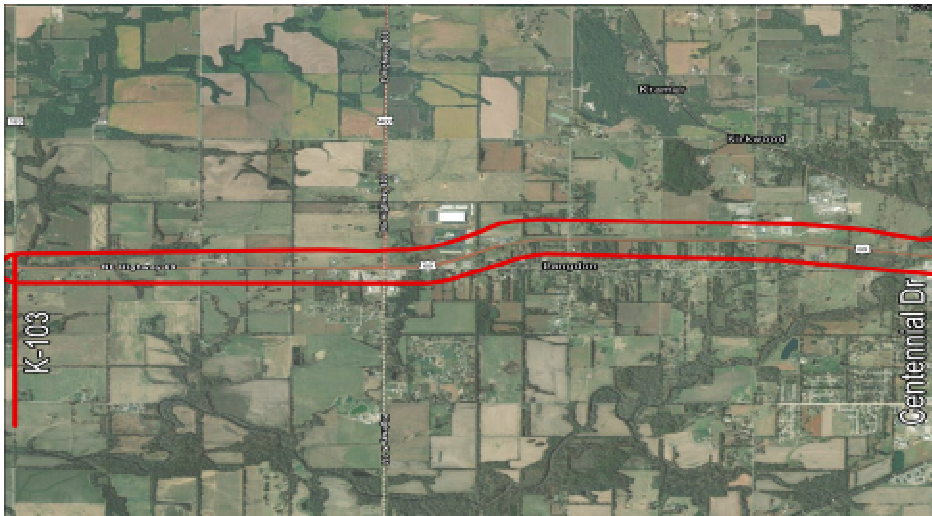
- New commercial or residential development along the corridor
 - Expansion of current businesses along corridor
 - Enhancements to better accommodate freight needs

- Strongly Disagree
- Disagree
- Neutral
- Agree
- Strongly Agree

Section 2: What's Most Important?

For the second part of this survey, rank order (1 - 5) the categories for each segment from most important to least important.

K-103 to Centennial Drive



___ Improve Traffic Flow (Development along the corridor, Improve connections from industrial areas to/from U.S. 69)

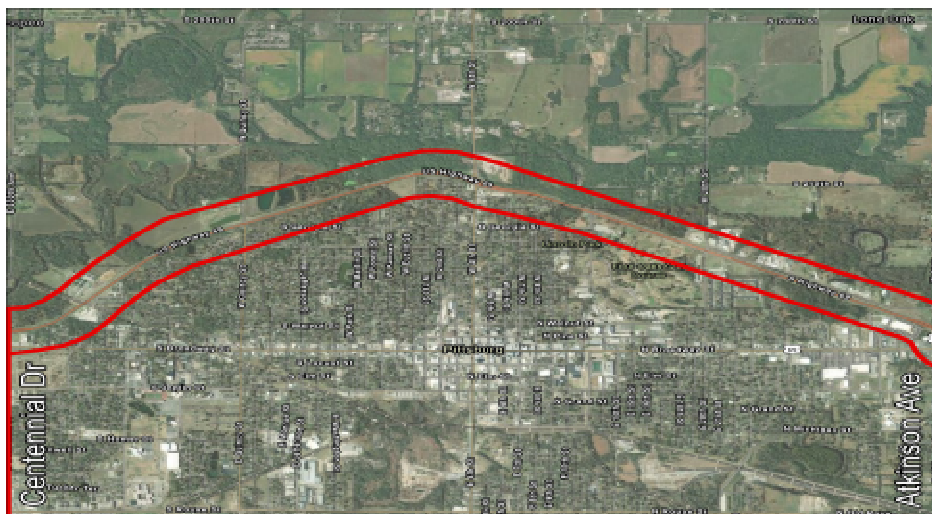
___ Enhance Safety (Signage & pavement marking improvements, Reduce points of conflict by closing access, Speed management)

___ Corridor Purpose (Provide access to surrounding development and provide safe traffic flow, Improve consistency with greater U.S. 69 highway)

___ Economic Development (Development along the corridor, Improve connections from industrial areas to/from U.S. 69)

___ Access Management (Ensure convenient access to neighborhoods and businesses)

Centennial Drive to E. Atkinson Avenue



___ Improve Traffic Flow (Development along the corridor, Improve connections from industrial areas to/from U.S. 69)

___ Enhance Safety (Signage & pavement marking improvements, Reduce points of conflict by closing access, Speed management)

___ Corridor Purpose (Provide access to surrounding development and provide safe traffic flow, Improve consistency with greater U.S. 69 highway)

___ Economic Development (Development along the corridor, Improve connections from industrial areas to/from U.S. 69)

___ Access Management (Ensure convenient access to neighborhoods and businesses)

